

DT-MK2.75 Installation Guide

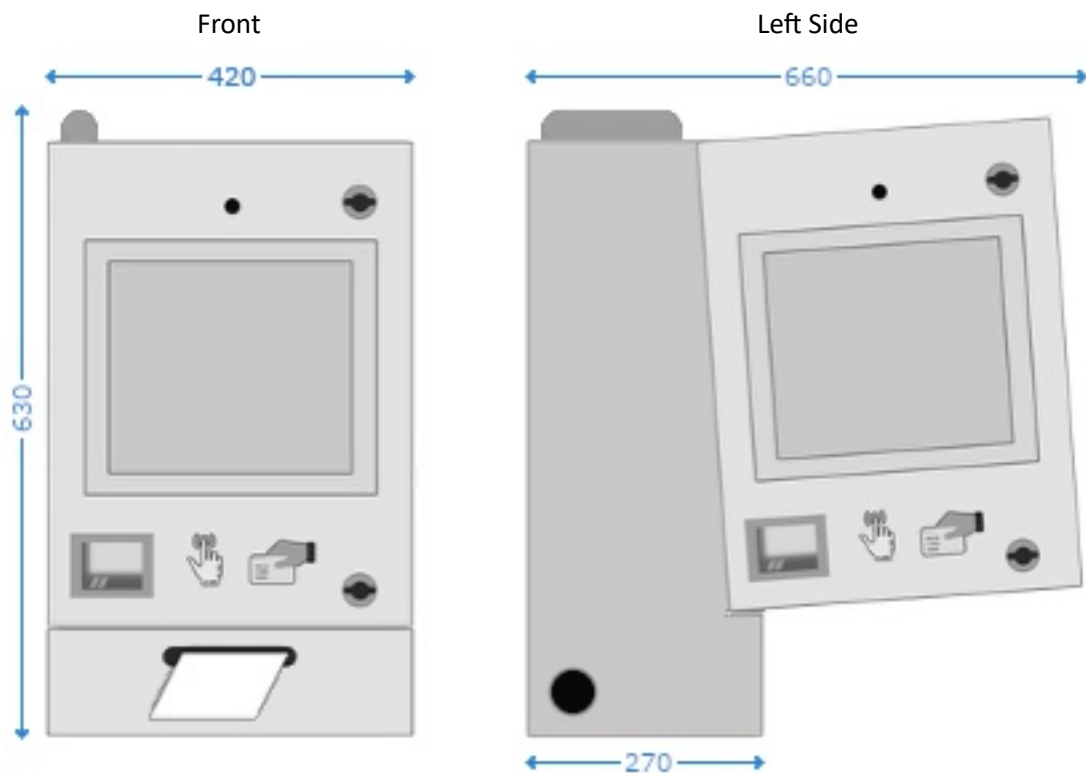


Terminal Specifications

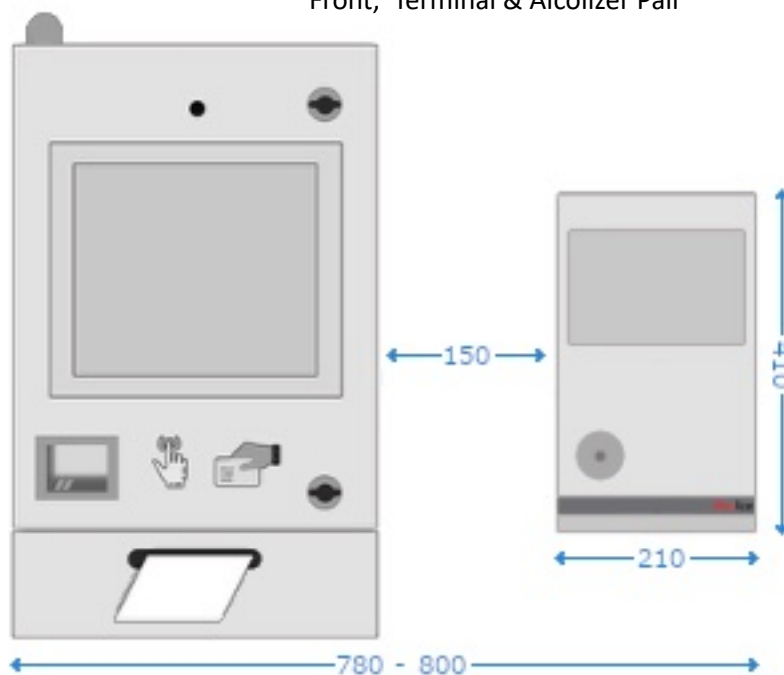
- Custom Enclosure with Powder Coat Finish
- 12" AIO Industrial Touch Screen & Mini PC Unit
- Multi-band Card Reader
- HD Visitor Camera
- Thermal Sticker Printer


Model	Power Requirements	Network Requirements
DT-MK2.75	2x 110-240v General Purpose Power Outlets (4x sockets included, via Power Board)	Ethernet, Wi-Fi or 4G

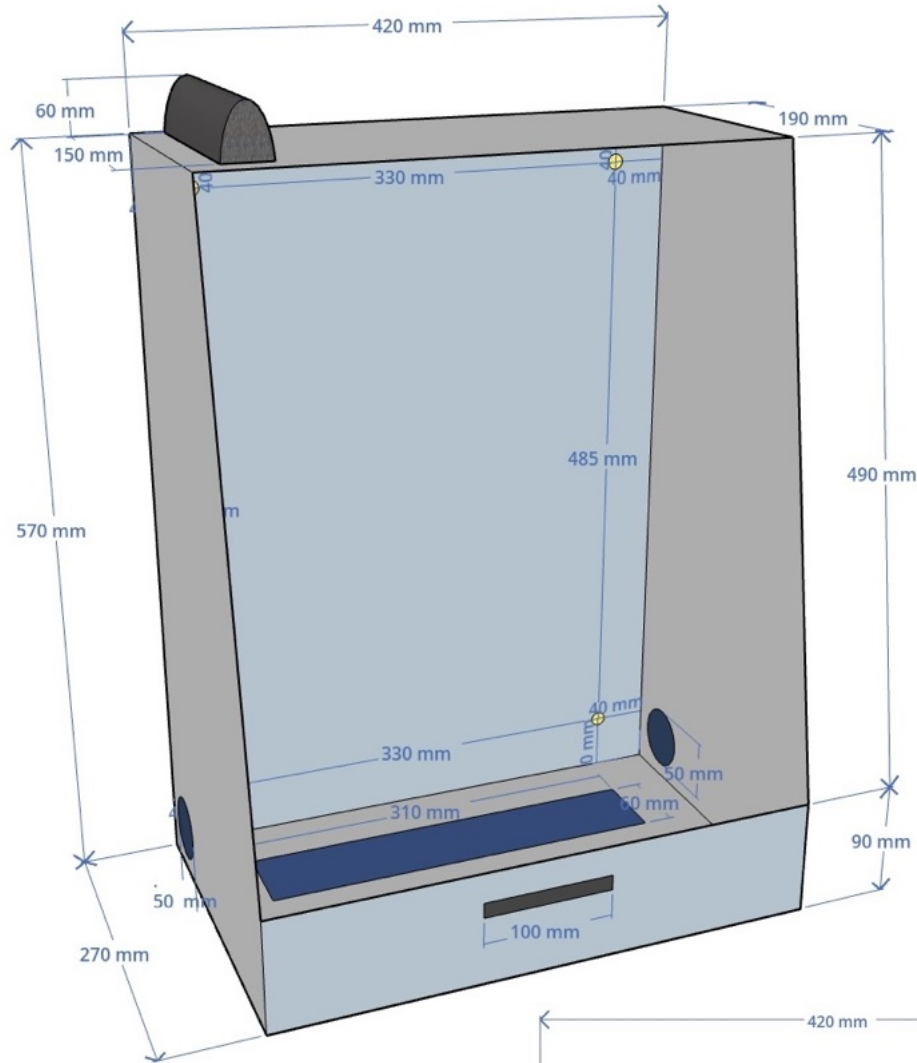
Dimensions & Installation Layout



Front, Terminal & Alcolizer Pair

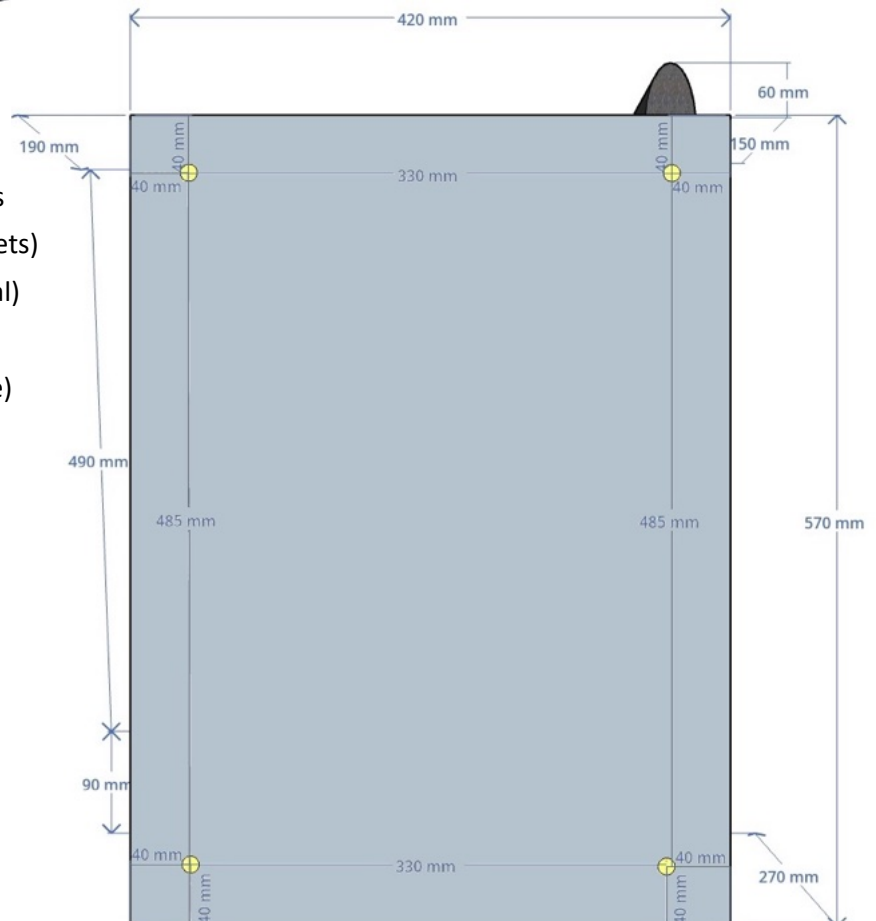


Note: If installing an Alcolizer unit with a Terminal, please refer to **Page 7** for further instructions. 



- Height 570mm (630 incl. antenna)
- Width 420mm
- Depth 270mm
- Weight 21kgs
- Operating Temp -10 to 50°C

- Rear mounting positions (4x M8 nuts + brackets)
- 330mm apart (horizontal)
- 485mm apart (vertical)
- 40mm offset (from edge)
- Minimum 150mm clearance required for all sides



Height & Clearance

The terminal cabinet is recommended to be mounted **with the top of the unit 1600mm – 1700mm from the ground**. This height has been found to provide a usable interface and comfort factor for persons, covering the widest range of person's heights. This is flexible and can be adjusted at the site's own discretion.

Mounting The Terminal

The terminal attaches to the wall via 4 anchor points, located in each corner on the rear of the cabinet.

The unit can be mounted to most surface types; however, weight (21kgs total) and usage needs to be considered for hollow-type walls.

Suitable mounting components should be used to ensure a safe and secure installation. Typically, this may include the use of UniStrut or similar mounting systems.

On solid wall types (metal, brick, etc.), the units may be attached directly to the wall using suitable mounting methods.

Only the removable back plate & the removable bottom plate may be modified. Do not drill or cut any additional holes in any other area of the enclosure. Failure to comply with this will result in additional charges upon return of the equipment. (See pages 5 & 6 for more information).

Mount the unit to the wall or mounting equipment using appropriate screws/bolts.
Tighten and ensure the unit is stable and secure.

Environmental & Connectivity

A suitable location for each Terminal should:

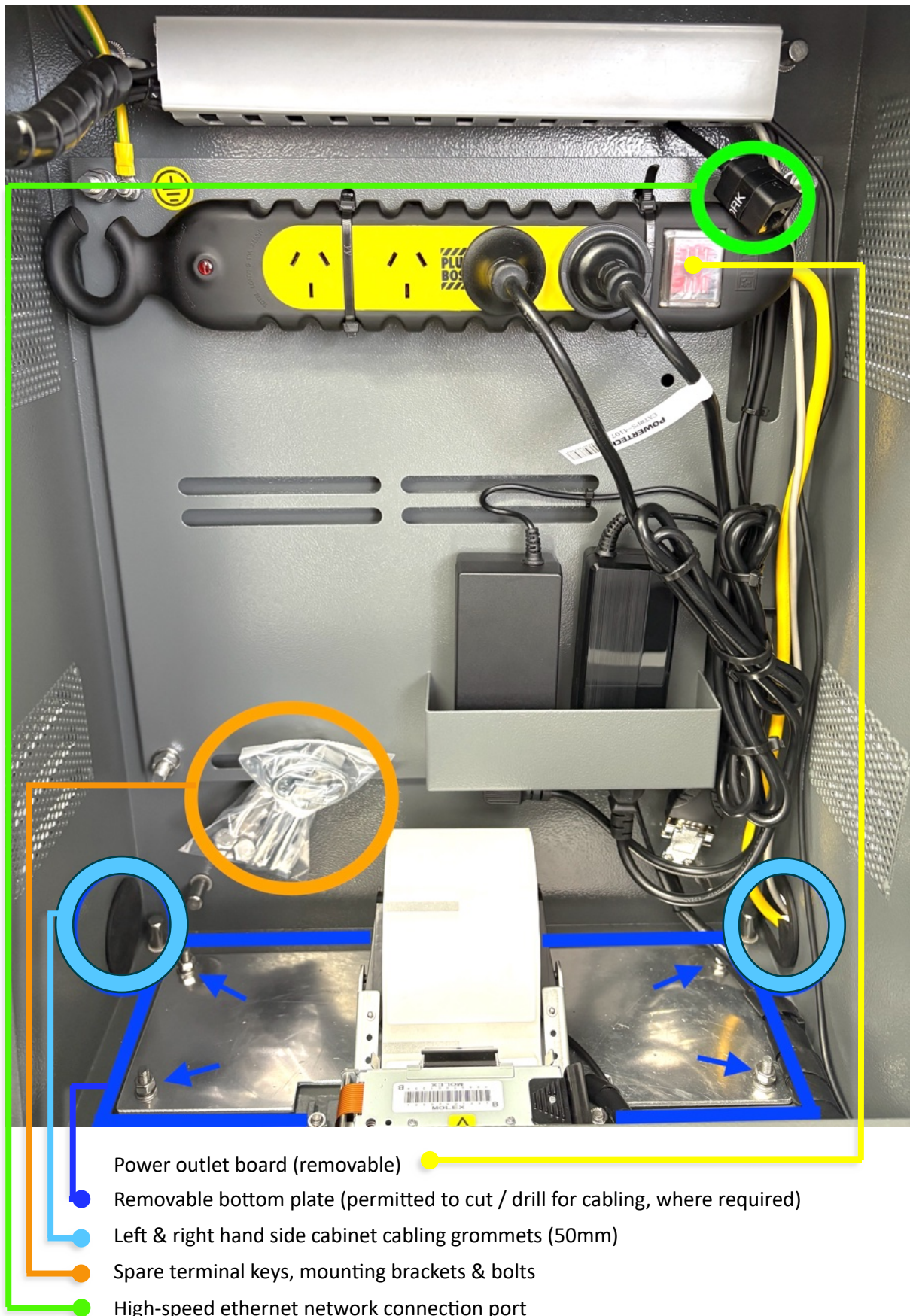
- be under cover & out of weather elements (rain, wind, dust and direct sun)
- provide enough wall mounting space for all equipment to be installed
- provide sufficient 4G cellular coverage where required
- and be a suitable location for the workforce to find and access the system easily.

Consideration should also be given to the ambient air temperature. If the environment temperatures exceed 40 degrees Celsius, an alternate install location should be found.

Note: Failure to mount the equipment out of direct sunlight, or in weather affected areas, will void all maintenance warranties and any cost of repair will be charged to the client / site.



Electrical & Data Cabling

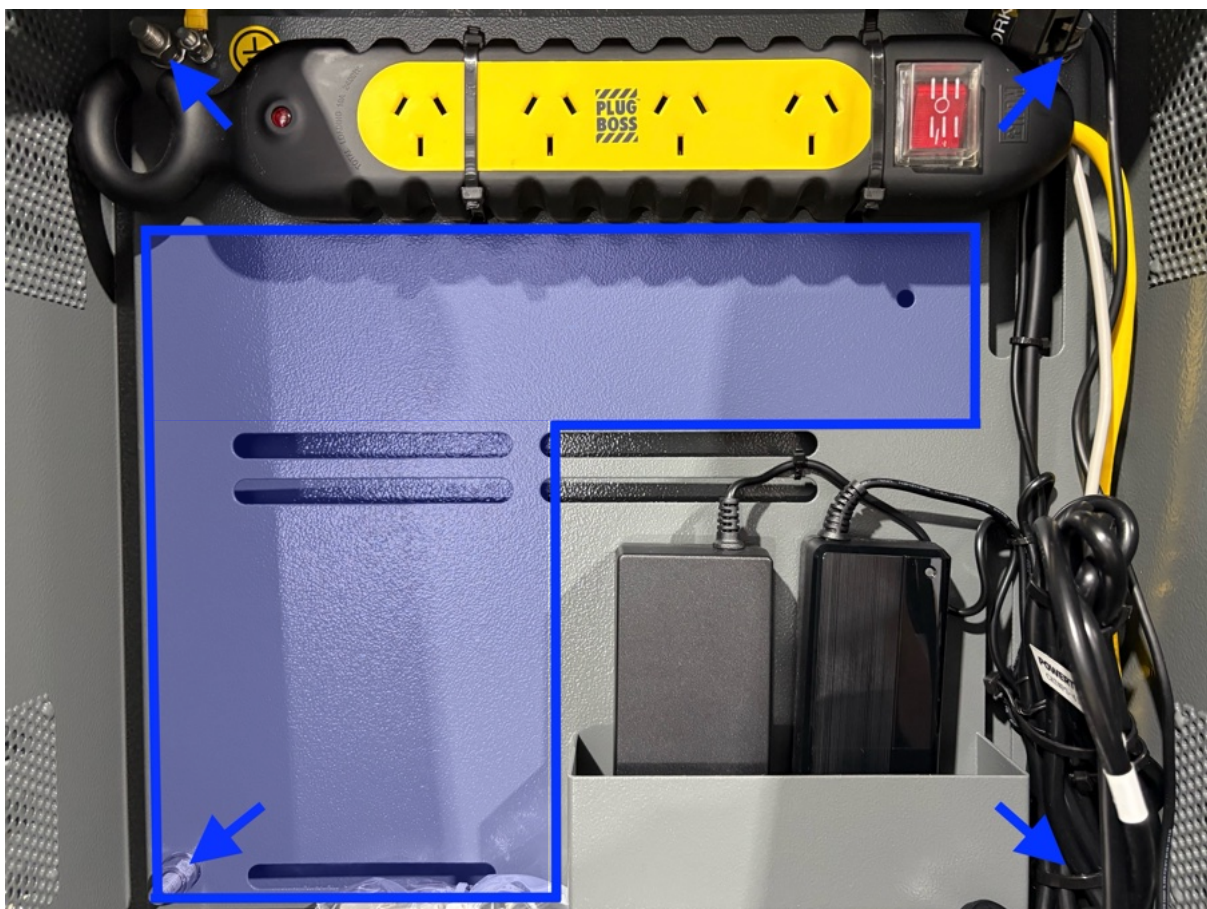


As each installation is unique, we recommend that cabling is entered through the left-hand or right-hand side openings, or by modifying the removable plate on the base of the cabinet.

Care should always be taken to ensure that any cables or conduit which are entering from the sides or bottom of the enclosure do not affect the printer operation, or the ability to open / close / lock the cabinet door.

By default, the Terminal will only require 2x Power Connections. We recommend powering these, as well as any external add-on equipment such as Alcolizers, **from inside the securely locked Terminal Cabinet** in order to prevent any tampering or mis-use.

GPOs, Network Ports etc may be installed inside the terminal cabinet, upon the removable back plate (shown below), if & where required.

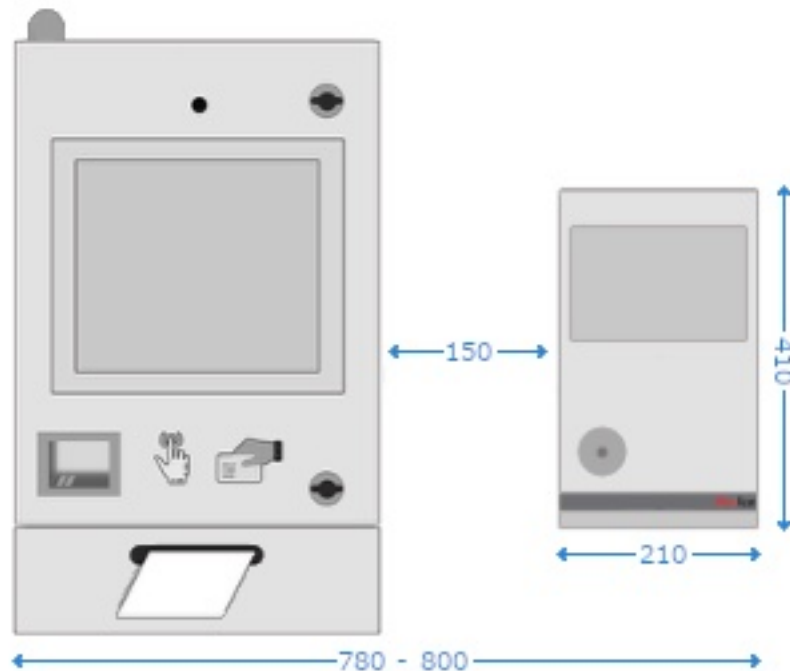


Only the removable back plate & the removable bottom plate may be modified. Do not drill or cut any additional holes in any other area of the enclosure. Failure to comply with this will result in additional charges upon return of the equipment.

Note: In no circumstance should any electrical, data or network cabling ever pass through the door frame of the terminal cabinet, or between the closed door & the door frame. Doing so will void all maintenance warranties and any cost of repair will be charged to the client / site.

Alcolizer Integration

Each Alcolizer should be installed with its paired Terminal in the same location, with 150mm clearance between the Alcolizer unit & the Terminal.



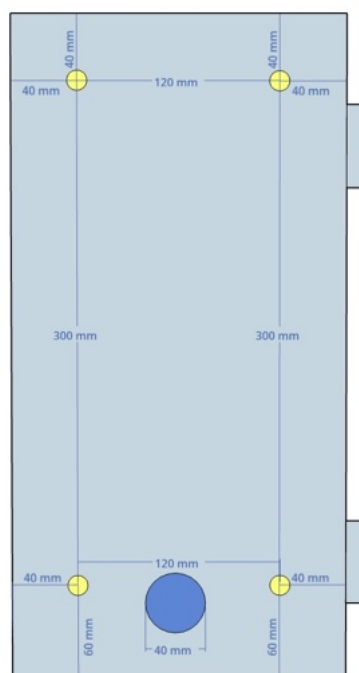
The Alcolizer has a removable rear panel, with 4x mounting positions (120mm apart horizontally, 300mm apart vertically).

Mount this plate to the wall or mounting equipment using appropriate screws/bolts.

Tighten and ensure the unit is stable and secure.

Please refer to the Alcolizer Instructional Guide for any device-specific installation instructions.

- Rear mounting positions
- 120mm apart (horizontal)
- 300mm apart (vertical)
- 40mm punchout panel
- Minimum 150mm clearance required for all sides



- Weight 4.5kgs
- Operating Temp -10 to 50°C
- Accuracy +/- 0.005 g/210L BrAC
- 12 month calibration module exchange
- AS3547-2019 & AS/NZS 3100:2017

The grey serial cable pictured below is required for connecting an Alcolizer with a Terminal. Ensure this cable is routed out from the Terminal, through any conduit, frame or structure & then connected into the paired Alcolizer mounted beside it.

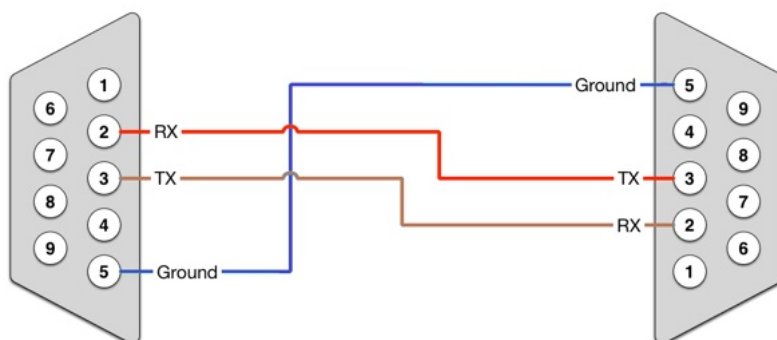


Cutting & joining any supplied cabling should be avoided at all costs, particularly with any Alcolizer COM cable or network cable.

Wiring joins are a known point of data-loss & equipment failure. The supplied unmodified single-piece cables should always be utilised where possible.

Although if absolutely necessary to accommodate the installation, any cutting & re-joining **must** be carried out professionally and all joins **must** be soldered, shielded and tested.

This practice is not recommended & will not supported by our Team.



Note:

- The Alcolizer data cable is not a regular serial cable. It is an RS232 Null Modem COM Cable.
- The Terminal and the Alcolizer will not communicate without this specific type of COM cable.
- If utilising any cut-and-join method (**which is not recommended**), please refer to the wiring diagram above.

Reminders

- To unlock & open the Terminal cabinet, use the keys provided; ensure to lock it again after the installation is complete.
- Test & confirm that all power outlets have power.
- Test & confirm that network connectivity is available & active.
- Once power is turned on, the Terminal & attached equipment will boot up automatically.
- Allow up to 1 hour for the Terminal to complete its start-up process & to collect any updates.
- Follow the instructions displayed on the Terminal screen to contact our Team & complete the initial setup.

Commissioning Checklist

Terminal	Location:	DT:
	Securely Mounted	
	Key / Door / Hinge	
	Power	
	Network	
	Display & Touch Screen	
	Speaker	
	Card Reader	
	Printer	
	Fingerprint Scanner	
	Visitor Camera	
	Alcolizer Connectivity	

Alcolizer	DT:	SN:
	Securely Mounted	
	Key / Door / Hinge	
	Power	
	Display	

Install Date:
Name:
Signature:
Ideagen Technician:
Ideagen Ticket:

Help & Support

- Ensure the unit has clean, filtered & uninterrupted mains power.
- Check that the network cable is connected. If troubleshooting a cellular Terminal, ensure there is strong 4G coverage available in the area.
- Inspect cables connecting devices (*Alcolizer, Printer, Card Reader*) for pinches or poor joins.
- Allow the Terminal up to 1 hour to complete its start-up/update process.
- If an attached device is not functioning correctly (*Alcolizer, Printer*), please restart the device.
- **So that our Support Team can assist further, please have all relevant information on hand.**
Email: service@damstratechnology.com
Phone: (AU) 1300 722 801, option 8.