

IMPORTANT

This DT-ACMK2 unit (DTxxxx) is pre-programmed based on the information supplied.

Please use the card reader inputs & MOXA outputs as indicated in this guide.

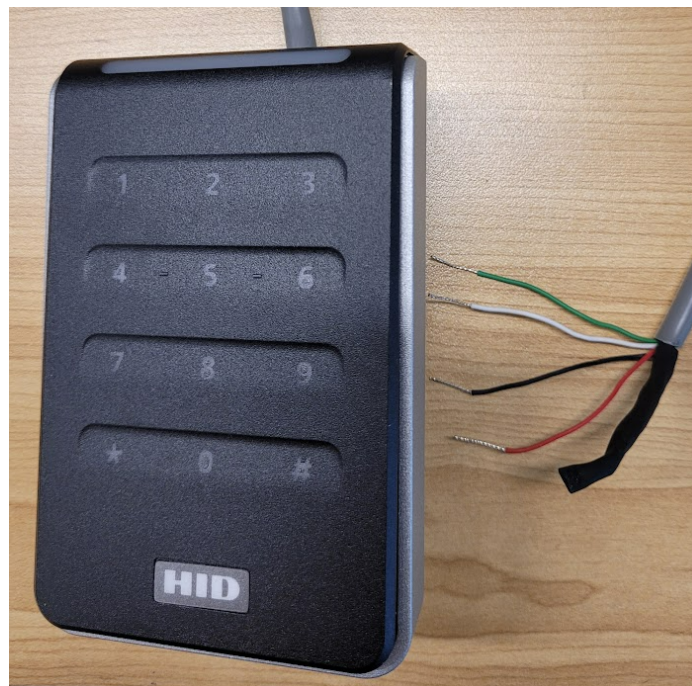
Any questions around the installation or the contents of this guide please contact us at service@damstratechnology.com or 1300 722 801

Before you Start –

Damstra recommends the use of multi-core 22 AWG (or thicker) shielded security cabling to ensure the end-to-end accuracy of reads at a distance of no greater than 80m between the card reader and access panel. Each reader should be run individually in the case of multiple readers at one location.

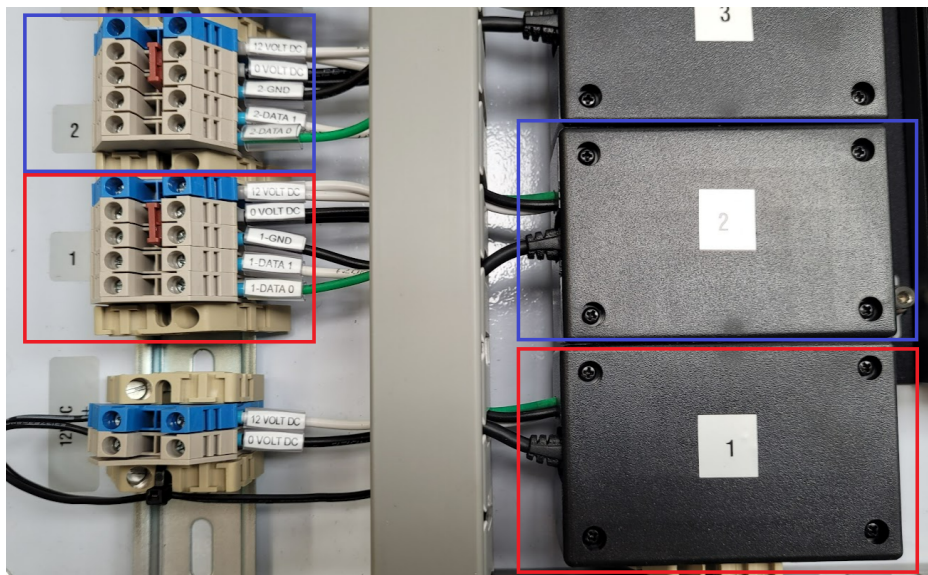
Card Readers –

Both swipe readers and keypad readers communicate via the Wiegand protocol. Each reader will have four connections back to the card reader inputs within the access panel being, 12v+ (Red), 12v- (Black), Data 0 (Green), Data 1 (White). Please ensure when being installed each connection is securely connected and isolated from each other to prevent any potential cross talk at the join to the cable run back to the access panel.



Card Reader Inputs -

The card reader inputs are located at the bottom left-hand side of the access panel numbered 1-8. The breakout terminal blocks as labelled are follows 12v+, 12v-, GND, Data 1 & Data 0, each numbered block of terminals represents the input for an individual card reader.

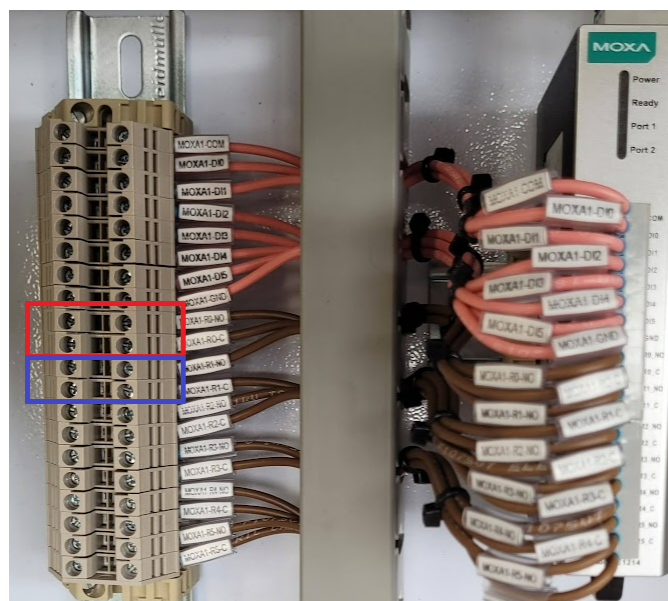


The following inputs have been preconfigured on this panel, please connect the relevant card reader to the following.

- **Input 1** -> Turnstile 1 In
- **Input 2** -> Turnstile 1 Out
- **Input 3** -> Turnstile 2 In
- **Input 4** -> Turnstile 2 Out
- **Input 5** -> Side Access Gate In
- **Input 6** -> Side Access Gate Out
- **Input 7** -> Vehicle Boom Gate In (Low Position)
- **Input 8** -> Vehicle Boom Gate In (High Position)

MOXA Outputs –

The MOXA outputs are located at the top left-hand corner of the access panel, these are a series of six normally open (NO) relays numbered R0-R5. For each relay the terminal blocks are labelled MOXA-R0-NO & MOXA-R0-C. Each relay represents an individual output to control an external device. E.g. a boom gate, turnstile IN/OUT etc. For situations such as maglock doors which require switched power, these can be configured as a normally closed (NC) relay where the negative is switched through the MOXA.



The following outputs have been preconfigured on this panel, please connect to the device being controlled.

- **MOXA 1 R0-NO/C** → Turnstile 1 In
- **MOXA 1 R1-NO/C** → Turnstile 1 Out
- **MOXA 1 R2-NO/C** → Turnstile 2 In
- **MOXA 1 R3-NO/C** → Turnstile 2 Out
- **MOXA 1 R4-NO/C** → Side Access Gate In/Out
- **MOXA 1 R5-NO/C** → Vehicle Boom Gate In