

Damstra Technology – Indoor Thermal Camera Replacement Guide

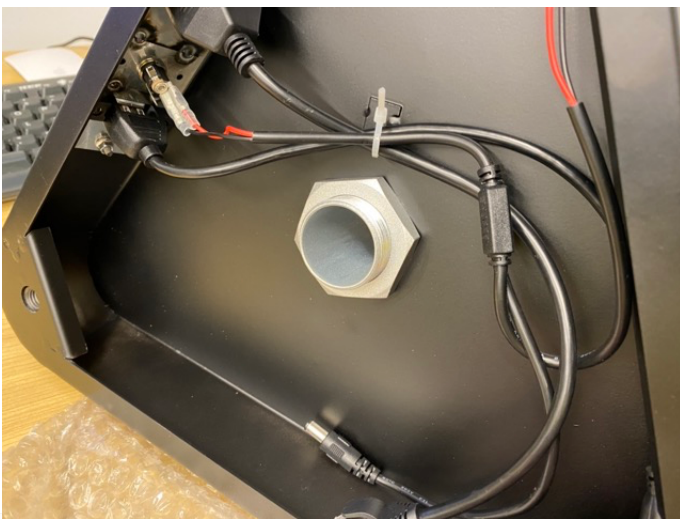
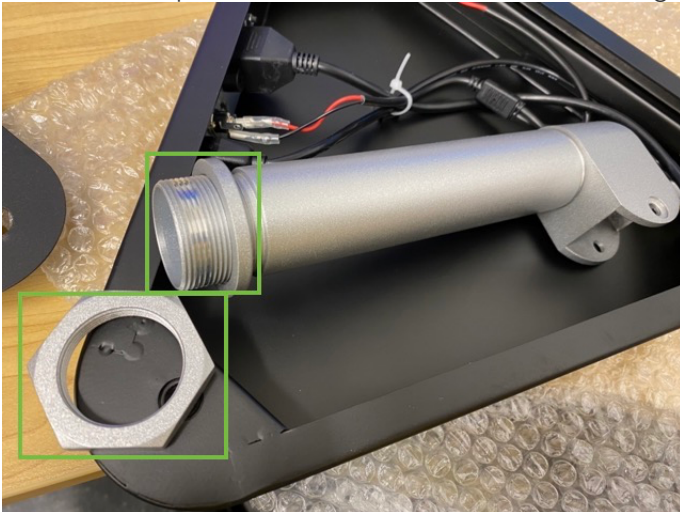
Step 1

Turn the base plate over & un-screw the 3x feet from the bottom.



Step 2

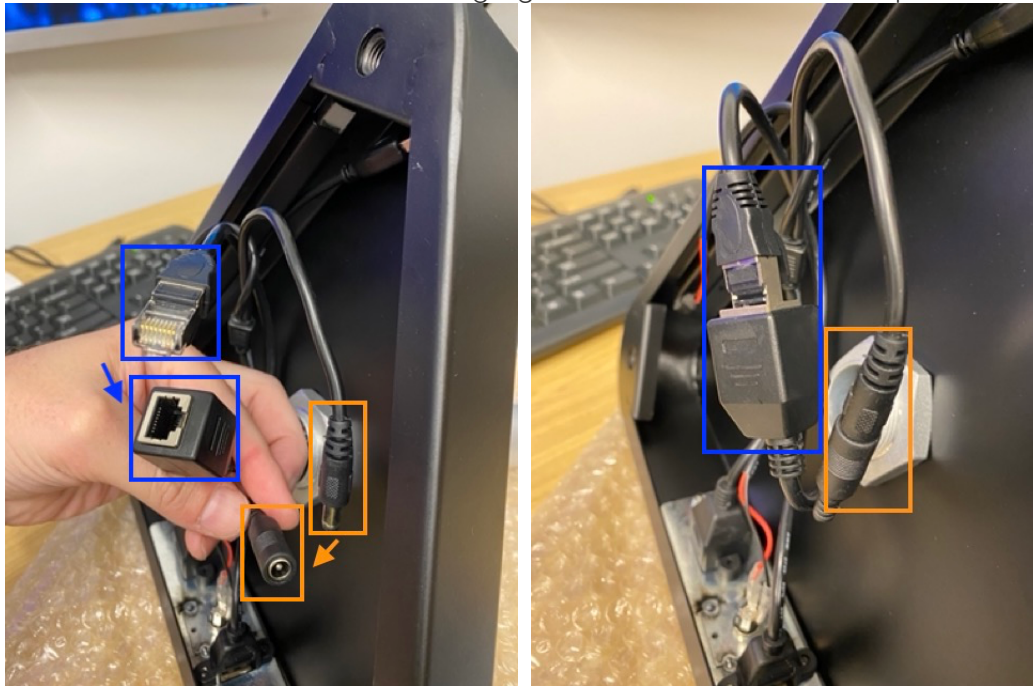
Un-screw the lock nut from the base of the pole & remove the old camera (still mounted to the original pole). Push the new pole (with new camera attached) through the circular hole. Screw the lock nut onto the pole.



Step 3

Pull the internal cables through the pole.

Connect the internal ethernet cable (highlighted in blue) and the internal power cable (highlighted in orange).



Step 4

Turn the unit over & connect the ethernet and the power cable to the outside of the base.

